



Free Knitting Pattern

LION BRAND® WOOL-EASE® THICK & QUICK® **SIERRA HAT**

Pattern Number: M20347 WETQ



SKILL LEVEL – EASY

SIZES

Finished Circumference About 16 in. (40.5 cm), will stretch to fit a range of sizes

Finished Height About 10 in. (25.5 cm)

MATERIALS

- LION BRAND® WOOL-EASE® THICK & QUICK® (Art. #640)
 - #137 Terracotta 1 ball (A)
 - #308 Starlight 1 ball (B)
 - #153 Black 1 ball (C)
- LION BRAND® stitch markers
- LION BRAND® Pom-Pom Maker
- LION BRAND® large-eyed blunt needle



ADDITIONAL MATERIALS

Circular needle size 15 (10 mm), 16 in. (40.5 cm) long

GAUGE

10 sts + 13 rnds = about 4 in. (10 cm) in St st (k every st in every rnd).

BE SURE TO CHECK YOUR GAUGE.

NOTES

1. Hat is worked in rnds from lower ribbing upwards.
2. Colorwork pattern is worked following Chart. When changing yarn color, do not cut old color. Carry color not in use along WS (inside) of piece. If carrying color across 5 or more sts, twist yarns on WS to prevent overly long strands (floats) on the WS.
3. Read each round of Chart from right to left and work the 20-st repeat 2 times along each round.

HAT

With A, cast on 40 sts.

Place marker for beg of rnd. Join by working the first st on left hand needle with the working yarn from the right hand needle and being careful not to twist sts.

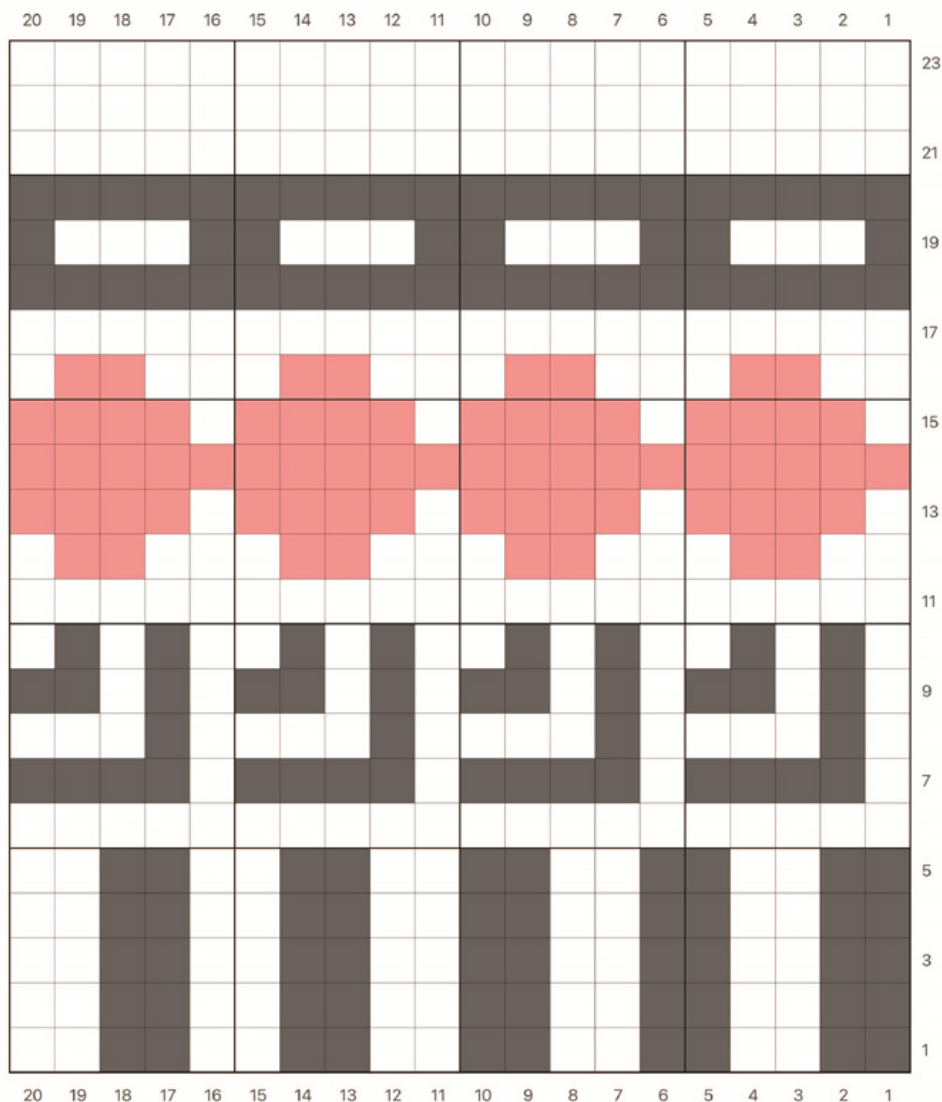
Ribbing

Rnds 1-8: *K1, p1; rep from * around.

Rnd 9: Knit.

Charted Pattern

Beginning with stitch 1 of Round 1 of Chart, work in St st (k every st in every rnd) and change yarn color following Chart until all 23 rounds of Chart have been completed.



COLOR KEY	
■	#137 Terracotta (A)
■	#308 Starlight (B)
■	#153 Black (C)

For thousands of free patterns, visit our website www.LionBrand.com

To order visit our website www.lionbrand.com or call: (800) 258-YARN (9276) any time!

Copyright ©1998-2020 Lion Brand Yarn Company, all rights reserved. No pattern or other material may be reproduced -- mechanically, electronically, or by any other means, including photocopying - without written permission of Lion Brand Yarn Company.

Cut yarn, leaving a long yarn tail. Thread tail through remaining sts and pull to close opening at top of Hat.
Knot securely.

FINISHING

Pom-Pom

With A and following package directions, make a pom-pom.

Tie pom-pom to top of Hat.

Weave in yarn ends.

ABBREVIATIONS

k = knit

p = purl

rep = repeat

rnd(s) = round(s)

St st = Stockinette stitch

st(s) = stitch(es)

WS = wrong side

Every effort has been made to produce accurate and complete instructions. We cannot be responsible for variance of individual knitters or crocheters, human error, or typographical mistakes.

©2020 Lion Brand Yarn Company, all rights reserved.

For thousands of free patterns, visit our website www.LionBrand.com

To order visit our website www.lionbrand.com or call: (800) 258-YARN (9276) any time!

Copyright ©1998-2020 Lion Brand Yarn Company, all rights reserved. No pattern or other material may be reproduced -- mechanically, electronically, or by any other means, including photocopying - without written permission of Lion Brand Yarn Company.